

**High Speed Servo Driven
VFFS Machine**
SA Series
Intermittent Motion **with Servo Auger Filler**



Quality
Made **A**ffordable...

SA Series

TECHNICAL SPECIFICATION

Machine Specification	P200 SA (Auger Filler)	P250 SA (Auger Filler)
Technology	Intermittent Motion	Intermittent Motion
Bag Width (Min. / Max.)	60-200 mm	60-250 mm
Bag Length (Max.)	275 mm	370 mm
Connecting Load	9 KW / Hr	9 KW / Hr
Air Requirement	3 CFM @ 7 Bar	3 CFM @ 7 Bar
Maximum Film Reel Width	425 mm	525 mm
Maximum Film Reel Diameter	450 mm	450 mm
Core ID	76 mm	76 mm
Maximum Machine Output	UPTO 120 BPM	UPTO 120 BPM
Maximum Machine Weight Approx.	800 Kg.	850 Kg.
Dimension L X W X H (mm)	1890 X 950 X 1825	1900 X 1050 X 1890



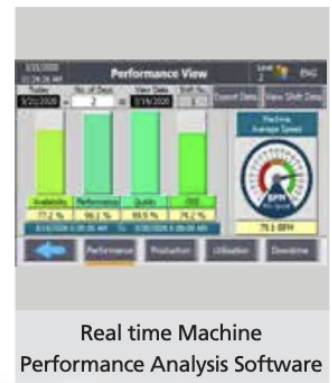
Servo driven Auger Filler



Bag pulling system with Static Charge Eliminator (Optional)



Servo driven Unwinding with splicing plate



Real time Machine Performance Analysis Software

COMPACT & RUGGED STRUCTURE

- Frame designed with strong, sturdy & precise components to ensure minimum vibration at optimum machine speed.

CONTROL SYSTEM

- High End Motion CPU loaded with Intelligent and interactive software.
- Multiple Machines can be connected through MIS / SCADA for remote monitoring.

SERVO DRIVEN AUGER FILLER

- Upto 1000th Part of the auger screw revolution can be adjusted.
- Synchronized start and stop movement of Auger screw with respect to horizontal Sealing System.

OPERATOR INTERFACE (HMI)

- Touch Controlled Color Display with User Friendly Graphical Interface.
- Save Up to 500 Recipe.
- OEE Data.

REAL SEALING TIME & CONTROLLED SEAL FORCE

- Sealing time remains constant at any given speed.
- Sealing Force can be adjusted to meet the sealing requirement of different laminate structures.

FORMING PARTS

- Easy Changeover.

